

**PRALL'S ISLAND COLONIAL WATERBIRD
NESTING HABITAT ENHANCEMENT**

**REMOVAL OF INVASIVE TREE SPECIES
WITHIN A PORTION OF
PRALLS ISLAND WILDLIFE PRESERVE**

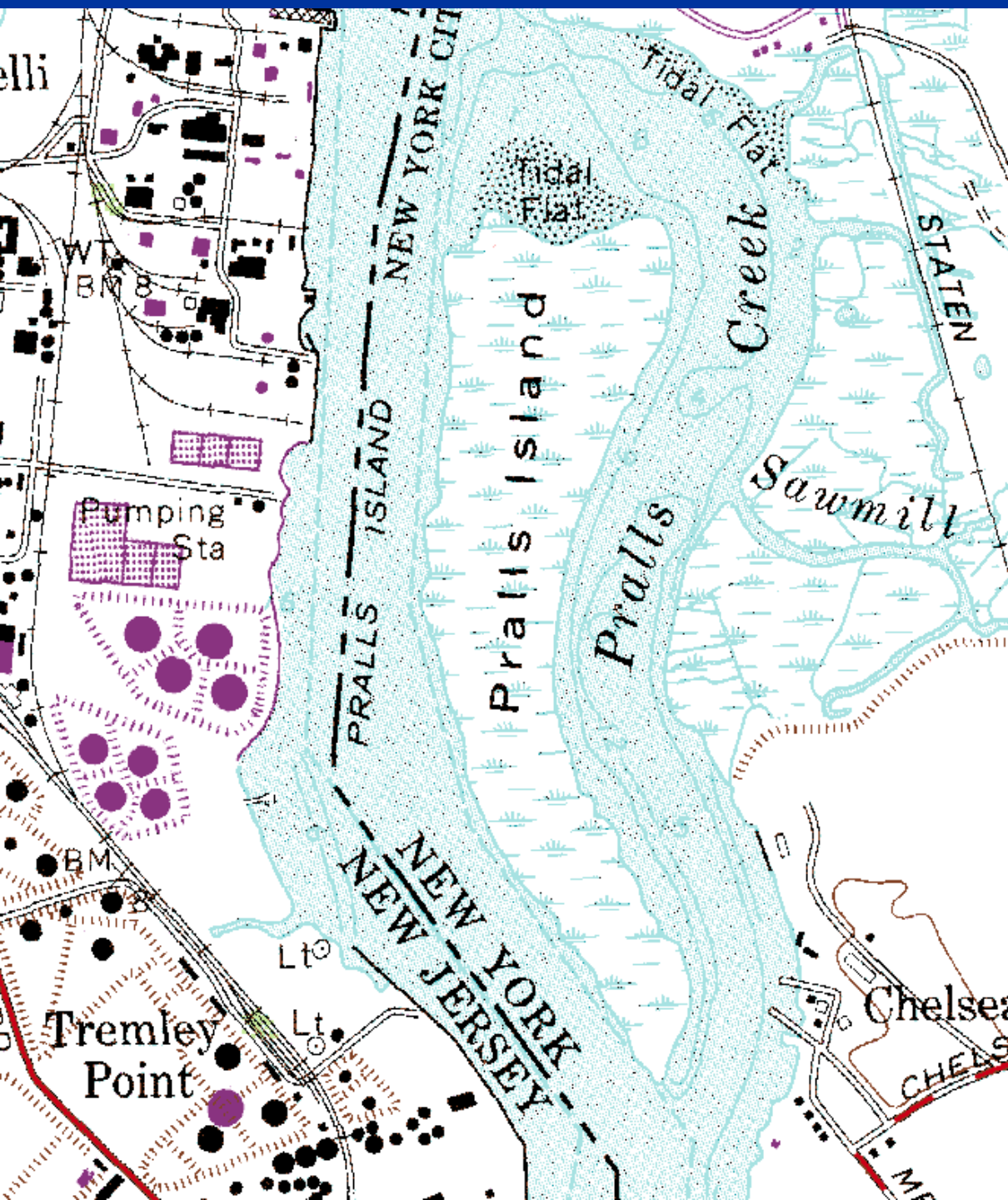
CONTRACT NUMBER: R122-109M

City of New York Parks & Recreation
Natural Resources Group (NRG)¹ and Capital Division²

¹Tim Wenskus, Alex Summers, Nate McVay, Mike Feller, Ellen Hartig

²Renata Sokolowski, Mike Browne





LOCATED IN THE
ARTHUR KILL,
WEST OF PRALLS
CREEK

BETWEEN CHELSEA
AND BLOOMFIELD
ROADS

BOROUGH OF
STATEN

PURPOSE

To allow colonial wading bird populations to recover from a decline in breeding success by increasing nesting habitat at Prall's Island.

PLAN

To remove invasive *Ailanthus* tree species that do not support nest sites.

To replace with native trees and shrubs preferred by wading birds.





Great Egret
chicks in nest (top),
adults (bottom)

Photographs by Mike Feller



Pralls Island Reach

Pralls Island Reach

Pralls Island



Chelsea Road

Chelsea Road/South Avenue

Image © 2007 Bluesky
Image © 2007 State of New Jersey
© 2007 Europa Technologies
© 2007 Tele Atlas

© 2005 Google™

Pointer 40°36'27.37" N 74°11'53.37" W

Streaming 100%

Eye alt 5040 ft

ACCESS/MOBILIZATION

- Each day Prall's Island must be accessed from a launch site in either Staten Island or New Jersey.
- Contractor must obtain permissions and pay related costs for launching boat(s).
- Boats can only land at the approved site at Prall's Island.
- Draft cannot exceed 30"

Landing Area for Anchoring Boats



CONDITIONS

- Mobilization by boat essential.
- Contractor must be fully covered by insurance.
- Be aware of harsh conditions, e.g. winter weather, poison ivy. Appropriate safety equipment needed.
- Boat access to Prall's Island is normally restricted to the non-nesting season between September and mid-March, (fall to winter) of any given year.

Sensitive Shoreline



Erosion, Pralls Island



Marsh retreat



Marsh undercutting

Removal Design

The intent is to create appropriate habitat by removing *Ailanthus altissima* (Tree of heaven).

Removals will be conducted by cluster as determined by the Natural Resources Group (NRG).

Contractors will remove trees marked by flagging or other indicators only.



Scope of Work

1. TREE REMOVAL— (*Ailanthus altissima*)

- Clear and grub <6” dbh (>1500 trees)
- Tree Removal 6” to 12” dbh (~350 trees)
- Tree Removal >12” dbh (~50 trees)
- Stumps to be no more than ankle height
- No chipping.
- Brush Piling.



© William S. Justice

Ailanthus in flower (above)
Ailanthus with fruit/samaras
(left and bottom)



© William S. Justice

Recognizing *Ailanthus altissima*

Leaf scar

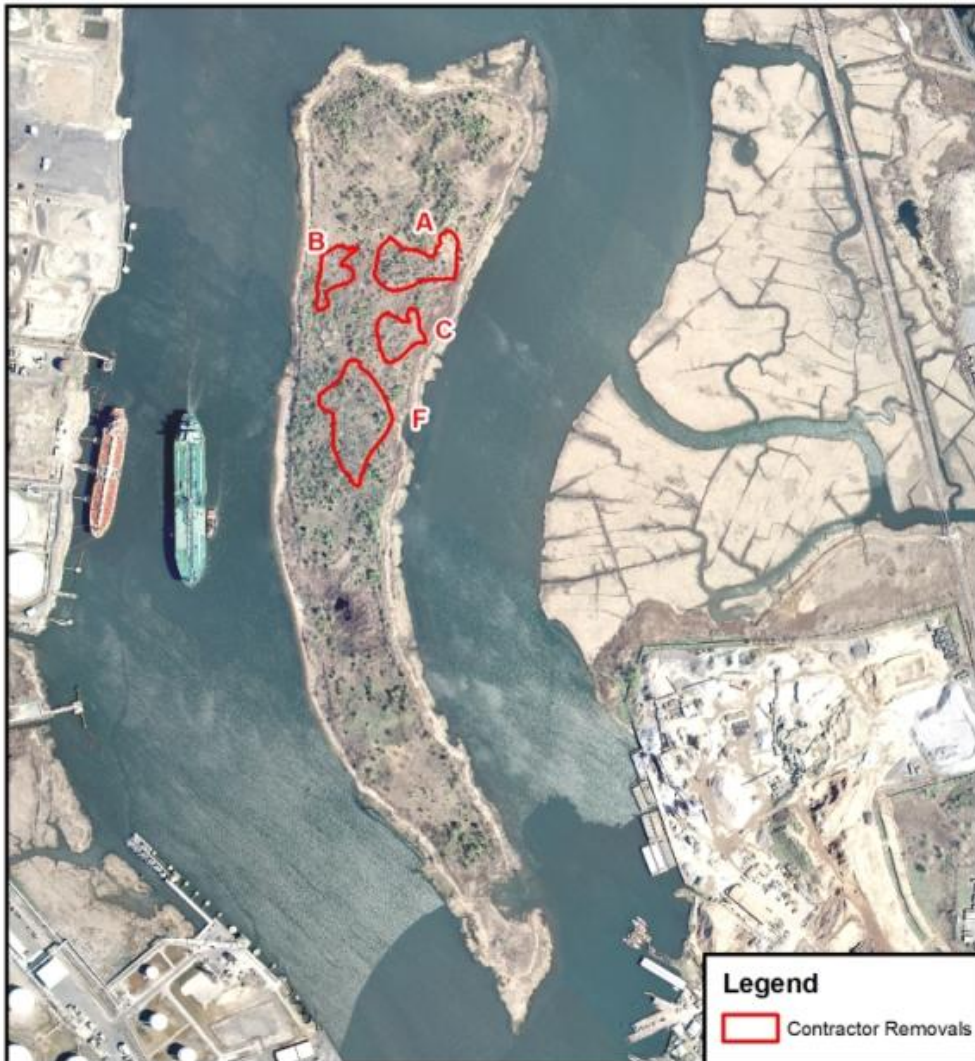


Leaf




Fruits/Samaras






**City of New York
Parks & Recreation
Natural Resources Group**
 Arsenal North, 1234 Fifth Avenue, New York, NY 10029
 Michael R. Bloomberg, Mayor
 Adrian Benepe, Commissioner
 Bram Gunther, Deputy Chief of Forestry & Horticulture
 Ellen Hartig, Project Manager
 Craig Mandel, GIS/Data Manager

0 500 1,000 1,500 2,000 Feet 
**Proposed Tree Removal Zones
Pralls Island Bond Act Project**
 as of 5-1-09
© 1 2008 This map is limited by the accuracy of its source data and is intended for illustrative use only.

Clusters

Ailanthus trees slated for removal are located within four clusters.

Clusters are marked in red—A, B, C, and F.

Scope of Work

2. CLEAR AND GRUB

- Grub trees up to and including 6" dbh.
- All material cleared shall be transported to nearest brush pile.



3. HERBICIDE TREATMENT

- NYS Certified Applicators shall treat each stump with an herbicide (glyphosate product e.g. Accord, Roundup or Rodeo).
- Apply herbicide immediately after cutting (within the first 5-15 minutes) with water-soluble formulations.
- Encircle top inside bark layer along the cambium to prevent regrowth and sprouting in accordance with package instructions.
 - Only the outer one-third of the stump surface need be treated.
- The mixture can be dabbed or painted on with a paint brush or by using a spray bottle or backpack sprayer.
- Number of stumps to be treated (~ 400 tree stumps plus ~1500 treated saplings from clearing and grubbing).

Notes

- The Contractor shall carefully protect all trees, shrubs and other vegetation that are to remain in place—only marked *Ailanthus* trees are to be removed. No other tree species shall be removed.
- Any unmarked trees, shrubs or environmentally sensitive habitats that are damaged as a result of the project shall be replaced or restored to the satisfaction of Parks staff. Tree guards for groves to be used as appropriate (to enclose a group of trees).

More Notes

- Needed items: Chainsaws, gasoline, potable water, protective gear for herbicide application—e.g. gloves, breathing masks.
- Be aware—supplies should include bug spray, poison ivy soap/cream.
- Items left overnight at Contractors own risk. Nothing of value is to be left overnight.
- No flammable items are to be left overnight.

Sub/Contractor to be ALB trained

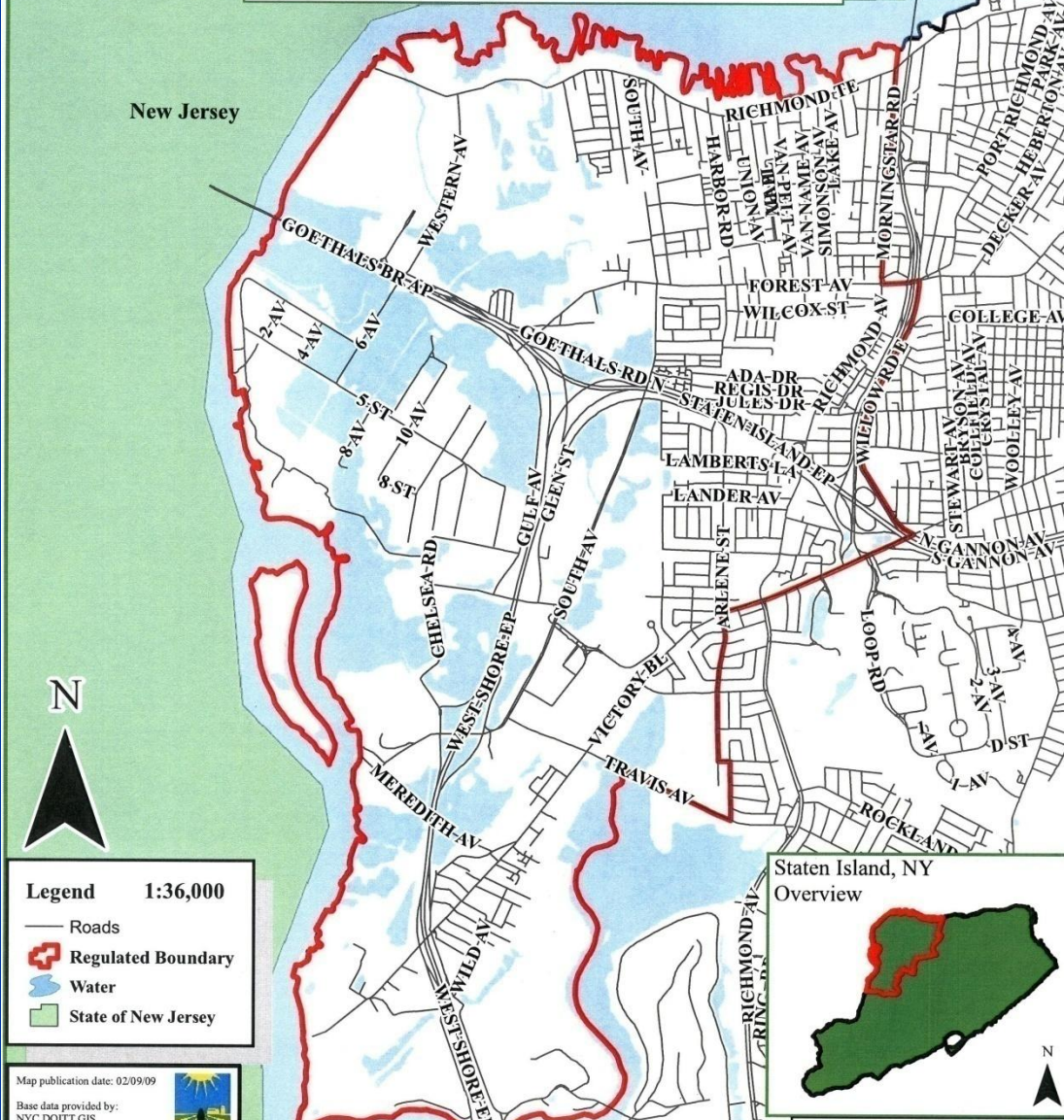


Maples and birch are vulnerable to ALB.

Ailanthus is not vulnerable to ALB.



*Staten Island, New York
Asian Longhorned Beetle
Eradication Program
PROPOSED Regulated Boundary*



Asian Longhorned Beetle
Quarantine Zone

Legend 1:36,000

- Roads
- Regulated Boundary
- Water
- State of New Jersey

Map publication date: 02/09/09
 Base data provided by:
 NYC DOITT GIS
 NJ OIT Office of GIS
 Acknowledgment:
 New York State Dept. of Agriculture & Markets



0.5 0.25 0 0.5 Mile

DISCLAIMER: The U.S. Department of Agriculture's Animal and Plant Health Inspection Service collected the data displayed for internal agency purposes only. This data may be used by others; however,

Summary

- No chipping of wood from trees is needed.
- Trees to be removed will be marked by NRG with paint or flagging;
- Trees are to be removed by cluster as mapped and as directed in the field by NRG staff.
- Tree removal is limited to *Ailanthus altissima* (Tree of Heaven).
- Herbicide to be applied to stumps within 5-15 minutes of cut.
- Tree saplings under 2" dbh shall be clipped (and treated with herbicide).
- Tree limbs will be placed in brush piles as directed by NRG.



Pralls Island tree removals
prior to replanting

CONTACT INFORMATION

Ellen Hartig
212-360-1481 (office)
ellen.hartig@parks.nyc.gov

By Mail

Ellen Hartig
Natural Resources Group (NRG)
NYC Department of Parks & Recreation
Arsenal North
1234 Fifth Avenue
New York, NY 10029

