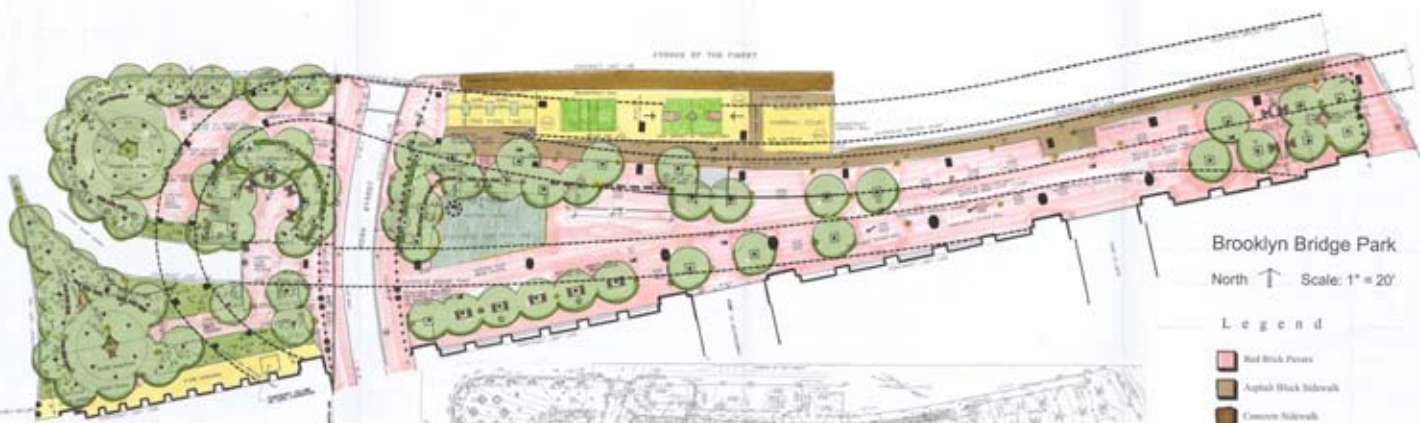


FRONT OF THE PARK



Brooklyn Bridge Park
North ↑ Scale: 1" = 20'

Legend

- Red Brick Pavers
- Asphalt Black Sidewalk
- Common Sidewalk
- Bull-Planting Bed
- Tar-Chi Circle
- Symbolic Tar-Play Area
- Existing Tree
- Proposed Tree
- Game Table
- 1964 World's Fair Bench
- Light Pole
- Existing Electric Utilities
- Existing Sanitary Sewer
- Brooklyn Bridge Ramp Columns



Existing Conditions



Tree Protection & Construction Staging

